



ACS Housing Summary

WARD I
Area: 17.27 square miles

City of Lynchburg - GIS Division

	2017-2021 ACS Estimate	Percent	MOE(±)	Reliability
TOTALS				
Total Population	19,305		1,373	High
Total Households	7,541		469	High
Total Housing Units	8,498		479	High
OWNER-OCCUPIED HOUSING UNITS BY MORTGAGE STATUS				
Total	4,315	100.0%	328	High
Housing units with a mortgage/contract to purchase/similar debt	2,610	60.5%	293	High
No Second Mortgage and No Home Equity Loan	2,200	51.0%	283	High
Multiple Mortgages	349	8.1%	97	Medium
Second mortgage and Home Equity Loan	0	0.0%	0	Low
Only Home Equity Loan	317	7.3%	94	Medium
Only Second Mortgage	32	0.7%	34	Low
Home Equity Loan without Primary Mortgage	61	1.4%	54	Low
Housing units without a mortgage	1,705	39.5%	237	High
AVERAGE VALUE BY MORTGAGE STATUS				
Housing units with a mortgage	N/A		N/A	
Housing units without a mortgage	N/A		N/A	
OWNER-OCCUPIED HOUSING UNITS BY MORTGAGE STATUS & SELECTED MONTHLY OWNER COSTS				
Total	4,315	100.0%	328	High
With a mortgage: Monthly owner costs as a percentage of household income in past 12 months				
Less than 10.0 percent	229	5.3%	88	Medium
10.0 to 14.9 percent	545	12.6%	140	Medium
15.0 to 19.9 percent	665	15.4%	168	Medium
20.0 to 24.9 percent	447	10.4%	130	Medium
25.0 to 29.9 percent	186	4.3%	73	Medium
30.0 to 34.9 percent	247	5.7%	121	Medium
35.0 to 39.9 percent	67	1.6%	49	Low
40.0 to 49.9 percent	110	2.5%	59	Medium
50.0 percent or more	114	2.6%	60	Medium
Not computed	0	0.0%	0	
Without a mortgage: Monthly owner costs as a percentage of household income in past 12 months				
Less than 10.0 percent	1,099	25.5%	195	High
10.0 to 14.9 percent	256	5.9%	120	Medium
15.0 to 19.9 percent	106	2.5%	52	Medium
20.0 to 24.9 percent	94	2.2%	57	Medium
25.0 to 29.9 percent	69	1.6%	46	Low
30.0 to 34.9 percent	15	0.3%	46	Low
35.0 to 39.9 percent	34	0.8%	25	Low
40.0 to 49.9 percent	6	0.1%	20	Low
50.0 percent or more	25	0.6%	28	Low
Not computed	0	0.0%	0	



ACS Housing Summary

WARD I
Area: 17.27 square miles

City of Lynchburg - GIS Division

	2017-2021 ACS Estimate	Percent	MOE(±)	Reliability
RENTER-OCCUPIED HOUSING UNITS BY CONTRACT RENT				
Total	3,226	100.0%	413	High
With cash rent	3,156	97.8%	413	High
Less than \$100	0	0.0%	0	
\$100 to \$149	0	0.0%	0	
\$150 to \$199	0	0.0%	0	
\$200 to \$249	9	0.3%	29	Low
\$250 to \$299	8	0.2%	12	Low
\$300 to \$349	22	0.7%	40	Low
\$350 to \$399	0	0.0%	0	
\$400 to \$449	46	1.4%	41	Low
\$450 to \$499	67	2.1%	45	Low
\$500 to \$549	8	0.2%	32	Low
\$550 to \$599	64	2.0%	58	Low
\$600 to \$649	491	15.2%	258	Medium
\$650 to \$699	292	9.1%	142	Medium
\$700 to \$749	446	13.8%	200	Medium
\$750 to \$799	344	10.7%	118	Medium
\$800 to \$899	527	16.3%	155	Medium
\$900 to \$999	265	8.2%	120	Medium
\$1,000 to \$1,249	311	9.6%	105	Medium
\$1,250 to \$1,499	91	2.8%	59	Medium
\$1,500 to \$1,999	75	2.3%	45	Medium
\$2,000 to \$2,499	0	0.0%	0	
\$2,500 to \$2,999	24	0.7%	28	Low
\$3,000 to \$3,499	24	0.7%	31	Low
\$3,500 or more	43	1.3%	26	Medium
No cash rent	70	2.2%	47	Low
Median Contract Rent	\$768		N/A	
Average Contract Rent	N/A		N/A	
RENTER-OCCUPIED HOUSING UNITS BY INCLUSION OF UTILITIES IN RENT				
Total	3,226	100.0%	413	High
Pay extra for one or more utilities	3,020	93.6%	409	High
No extra payment for any utilities	206	6.4%	59	Medium



ACS Housing Summary

WARD I
Area: 17.27 square miles

City of Lynchburg - GIS Division

	2017-2021 ACS Estimate	Percent	MOE(±)	Reliability
RENTER-OCCUPIED HOUSING UNITS BY GROSS RENT				
Total:	3,226	100.0%	413	
With cash rent:	3,156	97.8%	413	
Less than \$100	0	0.0%	0	
\$100 to \$149	0	0.0%	0	
\$150 to \$199	0	0.0%	0	
\$200 to \$249	0	0.0%	0	
\$250 to \$299	2	0.1%	14	
\$300 to \$349	15	0.5%	21	
\$350 to \$399	0	0.0%	0	
\$400 to \$449	9	0.3%	16	
\$450 to \$499	30	0.9%	38	
\$500 to \$549	53	1.6%	48	
\$550 to \$599	13	0.4%	22	
\$600 to \$649	73	2.3%	47	
\$650 to \$699	52	1.6%	43	
\$700 to \$749	360	11.2%	179	
\$750 to \$799	310	9.6%	196	
\$800 to \$899	701	21.7%	262	
\$900 to \$999	402	12.5%	108	
\$1,000 to \$1,249	703	21.8%	179	
\$1,250 to \$1,499	182	5.6%	110	
\$1,500 to \$1,999	127	3.9%	68	
\$2,000 to \$2,499	31	1.0%	32	
\$2,500 to \$2,999	24	0.7%	28	
\$3,000 to \$3,499	24	0.7%	31	
\$3,500 or more	43	1.3%	26	
No cash rent	70	2.2%	47	
Median Gross Rent	\$894		N/A	
Average Gross Rent	N/A		N/A	



ACS Housing Summary

WARD I
Area: 17.27 square miles

City of Lynchburg - GIS Division

	2017-2021 ACS Estimate	Percent	MOE(±)	Reliability
HOUSING UNITS BY UNITS IN STRUCTURE				
Total	8,498	100.0%	479	High
1, detached	4,894	57.6%	360	High
1, attached	580	6.8%	151	Medium
2	304	3.6%	129	Medium
3 or 4	396	4.7%	159	Medium
5 to 9	992	11.7%	276	Medium
10 to 19	803	9.4%	253	Medium
20 to 49	147	1.7%	70	Medium
50 or more	320	3.8%	89	Medium
Mobile home	63	0.7%	52	Low
Boat, RV, van, etc.	0	0.0%	0	
HOUSING UNITS BY YEAR STRUCTURE BUILT				
Total	8,498	100.0%	479	High
Built 2020 or later	9	0.1%	43	Low
Built 2010 to 2019	213	2.5%	3	Medium
Built 2000 to 2009	1,162	13.7%	217	High
Built 1990 to 1999	855	10.1%	187	Medium
Built 1980 to 1989	867	10.2%	175	Medium
Built 1970 to 1979	1,649	19.4%	326	Medium
Built 1960 to 1969	1,080	12.7%	219	Medium
Built 1950 to 1959	1,347	15.9%	285	Medium
Built 1940 to 1949	351	4.1%	104	Medium
Built 1939 or earlier	964	11.3%	176	High
Median Year Structure Built	1973		N/A	
OCCUPIED HOUSING UNITS BY YEAR HOUSEHOLDER MOVED INTO UNIT				
Total	7,541	100.0%	469	High
Owner occupied				
Moved in 2019 or later	196	2.6%	87	Medium
Moved in 2015 to 2018	897	11.9%	201	Medium
Moved in 2010 to 2014	731	9.7%	166	Medium
Moved in 2000 to 2009	1,056	14.0%	186	High
Moved in 1990 to 1999	792	10.5%	185	Medium
Moved in 1989 or earlier	642	8.5%	133	Medium
Renter occupied				
Moved in 2019 or later	631	8.4%	248	Medium
Moved in 2015 to 2018	1,388	18.4%	232	High
Moved in 2010 to 2014	753	10.0%	234	Medium
Moved in 2000 to 2009	373	4.9%	135	Medium
Moved in 1990 to 1999	43	0.6%	44	Low
Moved in 1989 or earlier	38	0.5%	38	Low
Median Year Householder Moved Into Unit	2013		N/A	

Source: U.S. Census Bureau, 2017-2021 American Community Survey

Reliability: High Medium Low

March 29, 2023



ACS Housing Summary

WARD I
Area: 17.27 square miles

City of Lynchburg - GIS Division

	2017-2021 ACS Estimate	Percent	MOE(±)	Reliability
OCCUPIED HOUSING UNITS BY HOUSE HEATING FUEL				
Total	7,541	100.0%	469	High
Utility gas	1,925	25.5%	226	High
Bottled, tank, or LP gas	115	1.5%	58	Medium
Electricity	5,246	69.6%	451	High
Fuel oil, kerosene, etc.	191	2.5%	61	Medium
Coal or coke	0	0.0%	0	
Wood	38	0.5%	44	Low
Solar energy	0	0.0%	0	
Other fuel	0	0.0%	0	
No fuel used	27	0.4%	26	Low
OCCUPIED HOUSING UNITS BY VEHICLES AVAILABLE				
Total	7,541	100.0%	469	High
Owner occupied				
No vehicle available	41	0.5%	31	Low
1 vehicle available	953	12.6%	182	High
2 vehicles available	2,185	29.0%	264	High
3 vehicles available	841	11.2%	195	Medium
4 vehicles available	166	2.2%	88	Medium
5 or more vehicles available	129	1.7%	57	Medium
Renter occupied				
No vehicle available	197	2.6%	58	Medium
1 vehicle available	1,527	20.2%	326	Medium
2 vehicles available	1,194	15.8%	279	Medium
3 vehicles available	204	2.7%	93	Medium
4 vehicles available	77	1.0%	52	Low
5 or more vehicles available	27	0.4%	75	Low
Average Number of Vehicles Available	N/A		N/A	
VACANT HOUSING UNITS				
Total vacant housing units	927	100.0%	236	Medium
For rent				
Rented, not occupied	50	5.4%	44	Low
For sale only	84	9.1%	67	Low
Sold, not occupied	8	0.9%	65	Low
Seasonal/occasional	105	11.3%	99	Low
For migrant workers	0	0.0%	0	
Other	350	37.8%	141	Medium



ACS Housing Summary

WARD I
Area: 17.27 square miles

City of Lynchburg - GIS Division

	2017-2021 ACS Estimate	Percent	MOE(±)	Reliability
OWNER-OCCUPIED HOUSING UNITS BY VALUE				
Total	4,315	100%	328	
Less than \$10,000	6	0.1%	10	
\$10,000 to \$14,999	0	0.0%	0	
\$15,000 to \$19,999	31	0.7%	34	
\$20,000 to \$24,999	3	0.1%	28	
\$25,000 to \$29,999	0	0.0%	0	
\$30,000 to \$34,999	0	0.0%	0	
\$35,000 to \$39,999	0	0.0%	0	
\$40,000 to \$49,999	44	1.0%	67	
\$50,000 to \$59,999	13	0.3%	20	
\$60,000 to \$69,999	15	0.3%	16	
\$70,000 to \$79,999	46	1.1%	63	
\$80,000 to \$89,999	37	0.9%	27	
\$90,000 to \$99,999	56	1.3%	34	
\$100,000 to \$124,999	317	7.3%	139	
\$125,000 to \$149,999	218	5.1%	72	
\$150,000 to \$174,999	484	11.2%	129	
\$175,000 to \$199,999	487	11.3%	125	
\$200,000 to \$249,999	677	15.7%	143	
\$250,000 to \$299,999	533	12.4%	142	
\$300,000 to \$399,999	667	15.5%	155	
\$400,000 to \$499,999	360	8.3%	140	
\$500,000 to \$749,999	273	6.3%	93	
\$750,000 to \$999,999	48	1.1%	34	
\$1,000,000 to \$1,499,999	1	0.0%	2	
\$1,500,000 to \$1,999,999	0	0.0%	0	
\$2,000,000 or more	0	0.0%	0	
Median Home Value	\$229,616		N/A	
Average Home Value	N/A		N/A	

Data Note: N/A means not available.

2017-2021 ACS Estimate: The American Community Survey (ACS) replaces census sample data. Esri is releasing the 2017-2021 ACS estimates, five-year period data collected monthly from January 1, 2017 through December 31, 2021. Although the ACS includes many of the subjects previously covered by the decennial census sample, there are significant differences between the two surveys including fundamental differences in survey design and residency rules.

Margin of error (MOE): The MOE is a measure of the variability of the estimate due to sampling error. MOEs enable the data user to measure the range of uncertainty for each estimate with 90 percent confidence. The range of uncertainty is called the confidence interval, and it is calculated by taking the estimate +/- the MOE. For example, if the ACS reports an estimate of 100 with an MOE of +/- 20, then you can be 90 percent certain the value for the whole population falls between 80 and 120.

Reliability: These symbols represent threshold values that Esri has established from the Coefficients of Variation (CV) to designate the usability of the estimates. The CV measures the amount of sampling error relative to the size of the estimate, expressed as a percentage.

- High Reliability: Small CVs (less than or equal to 12 percent) are flagged green to indicate that the sampling error is small relative to the estimate and the estimate is reasonably reliable.
- Medium Reliability: Estimates with CVs between 12 and 40 are flagged yellow-use with caution.
- Low Reliability: Large CVs (over 40 percent) are flagged red to indicate that the sampling error is large relative to the estimate. The estimate is considered very unreliable.



Demographic and Income Profile

WARD I
Area: 17.27 square miles

City of Lynchburg - GIS Division

Summary	Census 2010	Census 2020	2022	2027
Population	18,394	18,986	18,934	18,873
Households	7,691	7,843	7,825	7,822
Families	4,668	-	4,675	4,638
Average Household Size	2.32	2.33	2.33	2.32
Owner Occupied Housing Units	4,599	-	4,392	4,417
Renter Occupied Housing Units	3,095	-	3,433	3,405
Median Age	37.3	-	38.5	39.0

Trends: 2022-2027 Annual Rate	Area	State	National
Population	-0.06%	0.26%	0.25%
Households	-0.01%	0.29%	0.31%
Families	-0.16%	0.22%	0.28%
Owner HHs	0.11%	0.51%	0.53%
Median Household Income	1.36%	2.72%	3.12%

Households by Income	2022		2027	
	Number	Percent	Number	Percent
<\$15,000	402	5.1%	327	4.2%
\$15,000 - \$24,999	296	3.8%	235	3.0%
\$25,000 - \$34,999	626	8.0%	523	6.7%
\$35,000 - \$49,999	899	11.5%	841	10.8%
\$50,000 - \$74,999	1,434	18.3%	1,369	17.5%
\$75,000 - \$99,999	1,405	18.0%	1,421	18.2%
\$100,000 - \$149,999	1,313	16.8%	1,281	16.4%
\$150,000 - \$199,999	708	9.0%	878	11.2%
\$200,000+	741	9.5%	946	12.1%
Median Household Income	\$78,387		\$83,854	
Average Household Income	\$109,814		\$125,999	
Per Capita Income	\$45,877		\$52,830	

Population by Age	Census 2010		2022		2027	
	Number	Percent	Number	Percent	Number	Percent
0 - 4	1,167	6.3%	1,091	5.8%	1,130	6.0%
5 - 9	1,113	6.1%	1,024	5.4%	1,012	5.4%
10 - 14	1,065	5.8%	1,005	5.3%	970	5.1%
15 - 19	1,211	6.6%	1,244	6.6%	1,154	6.1%
20 - 24	1,905	10.4%	1,703	9.0%	1,759	9.3%
25 - 34	2,266	12.3%	2,609	13.8%	2,460	13.0%
35 - 44	2,030	11.0%	2,044	10.8%	2,272	12.0%
45 - 54	2,470	13.4%	1,995	10.5%	1,911	10.1%
55 - 64	2,185	11.9%	2,307	12.2%	2,014	10.7%
65 - 74	1,404	7.6%	2,006	10.6%	2,080	11.0%
75 - 84	965	5.2%	1,226	6.5%	1,428	7.6%
85+	614	3.3%	681	3.6%	683	3.6%

Race and Ethnicity	Census 2010		Census 2020		2022		2027	
	Number	Percent	Number	Percent	Number	Percent	Number	Percent
White Alone	14,379	78.2%	14,030	73.9%	13,874	73.3%	13,600	72.1%
Black Alone	3,008	16.4%	3,029	16.0%	3,064	16.2%	3,055	16.2%
American Indian Alone	36	0.2%	55	0.3%	55	0.3%	55	0.3%
Asian Alone	423	2.3%	369	1.9%	369	1.9%	366	1.9%
Pacific Islander Alone	5	0.0%	5	0.0%	5	0.0%	5	0.0%
Some Other Race Alone	200	1.1%	402	2.1%	429	2.3%	498	2.6%
Two or More Races	343	1.9%	1,095	5.8%	1,139	6.0%	1,293	6.9%
Hispanic Origin (Any Race)	494	2.7%	796	4.2%	814	4.3%	868	4.6%

Data Note: Income is expressed in current dollars.

Source: Esri forecasts for 2022 and 2027. U.S. Census Bureau 2010 decennial Census data converted by Esri into 2020 geography.

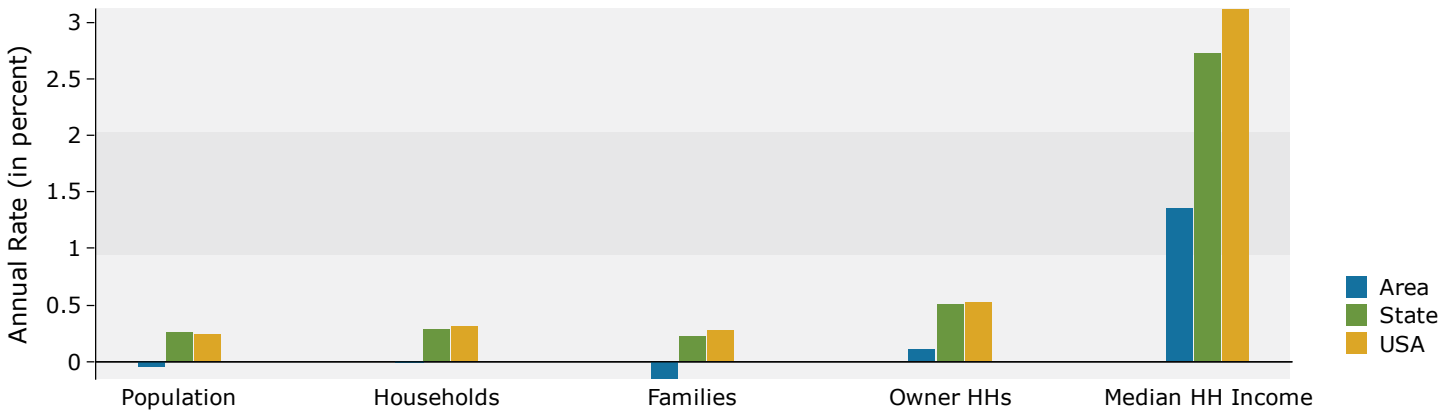


Demographic and Income Profile

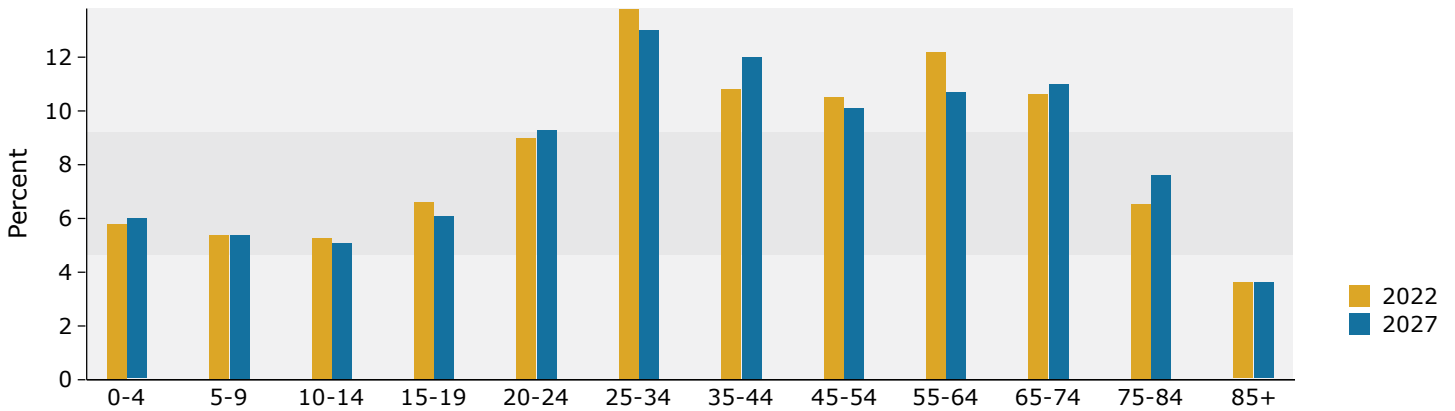
WARD I
Area: 17.27 square miles

City of Lynchburg - GIS Division

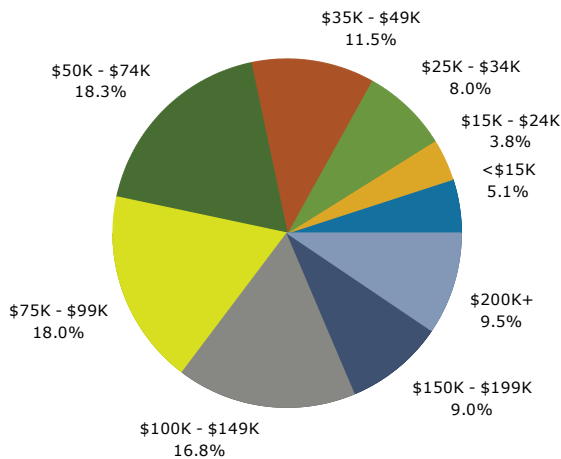
Trends 2022-2027



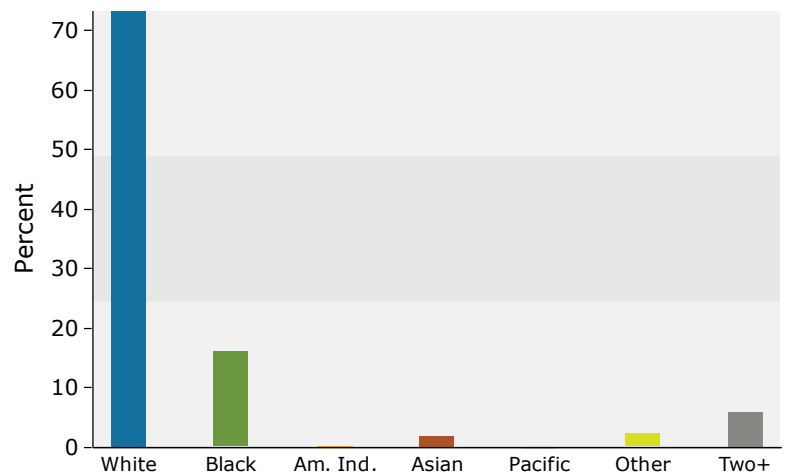
Population by Age



2022 Household Income



2022 Population by Race



2022 Percent Hispanic Origin: 4.3%

Source: Esri forecasts for 2022 and 2027. U.S. Census Bureau 2010 decennial Census data converted by Esri into 2020 geography.



Age 65 Profile

WARD I
Area: 17.27 square miles

City of Lynchburg - GIS Division

Demographic Summary		Census 2010		2022	2027	2022-2027	2022-2027
						Change	Annual Rate
Total Population		18,394		18,934	18,873	-61	-0.06%
Population 65+		2,983		3,913	4,191	-3,069	-10%
Median Age		37.3		38.5	39.0	0.5	0.26%
Households		7,691		7,825	7,822	-3	-0.01%
Population by Age and Sex							
Male Population		Census 2010		2022		2027	
		Number	% of 65+	Number	% of 50+	Number	% of 50+
Total (65+)		1,221	100.0%	1,685	100.0%	1,830	100.0%
65-69		372	13.0%	491	15.0%	519	16.1%
70-74		279	9.7%	430	13.2%	455	14.2%
75-79		209	7.3%	324	9.9%	364	11.3%
80-84		165	5.8%	209	6.4%	246	7.7%
85+		196	6.8%	231	7.1%	246	7.7%
Female Population		Census 2010		2022		2027	
		Number	% of 65+	Number	% of 50+	Number	% of 50+
Total (65+)		1,763	100.0%	2,230	100.0%	2,360	100.0%
65-69		431	12.0%	586	14.7%	571	14.5%
70-74		322	8.9%	501	12.5%	534	13.5%
75-79		279	7.7%	402	10.1%	476	12.1%
80-84		312	8.7%	291	7.3%	342	8.7%
85+		419	11.6%	450	11.3%	437	11.1%
Total Population		Census 2010		2022		2027	
		Number	% of Total Pop	Number	% of Total Pop	Number	% of Total Pop
Total(65+) 2010 Total		2,983	16%	3,913	21%	4,191	22%
65-69		803	4.4%	1,076	5.7%	1,091	5.8%
70-74		601	3.3%	930	4.9%	989	5.2%
75-79		488	2.7%	726	3.8%	840	4.5%
80-84		477	2.6%	500	2.6%	588	3.1%
85+		614	3.3%	681	3.6%	683	3.6%
75+		1,579	8.6%	1,907	10.1%	2,111	11.2%

Data Note - A "-" indicates that the variable was not collected in the 2010 Census.