

# Best Practices for Managing Fats, Oils, and Grease



## ALWAYS



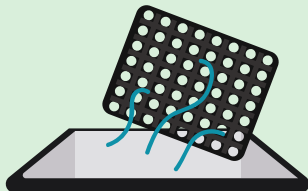
**ALWAYS** wipe pots, pans, and work areas into the trash prior to washing.



**ALWAYS** dispose of food waste directly into the trash can.



**ALWAYS** collect waste oil and store for proper disposal or recycling.



**ALWAYS** clean mats inside over a utility sink that is connected to a grease control device.



## NEVER



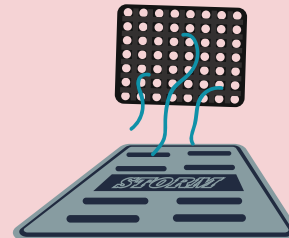
**NEVER** pour cooking residue directly into the drain.



**NEVER** dispose of food waste into the garbage disposal.



**NEVER** pour waste oil down the drain.



**NEVER** wash floor mats where water will run off directly into the storm drain.



For more information, please contact Lynchburg Water Resources at 434-455-6240 or by email at [fog@lynchburgva.gov](mailto:fog@lynchburgva.gov) or visit [www.lynchburgva.gov/sewer-programs](http://www.lynchburgva.gov/sewer-programs)