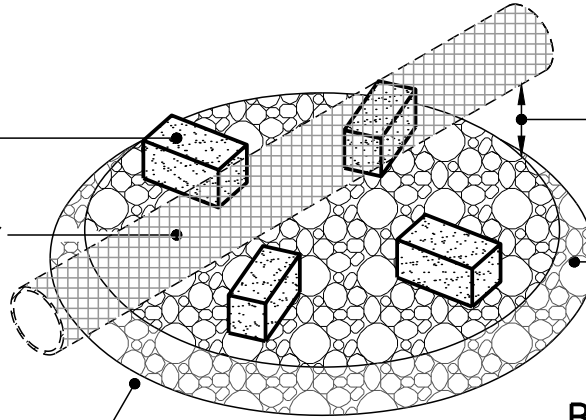


8"x8"x16" SOLID  
CONCRETE BLOCK  
CENTER W/RISER  
WALL (4 EACH)

EXISTING SANITARY  
SEWER PIPE

SEE SPECS FOR  
FOUNDATION  
IMPROVEMENT  
WHEN NEEDED



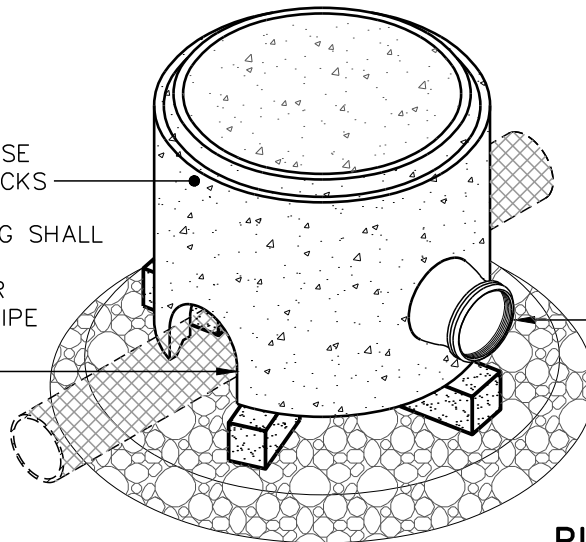
MIN. 8" CLEAR  
BETWEEN EXISTING  
PIPE AND PROPOSED  
STONE

12" THICK VDOT  
No. 57 STONE

**BASE ISOMETRIC VIEW**

SET DOGHOUSE BASE  
ON CONCRETE BLOCKS

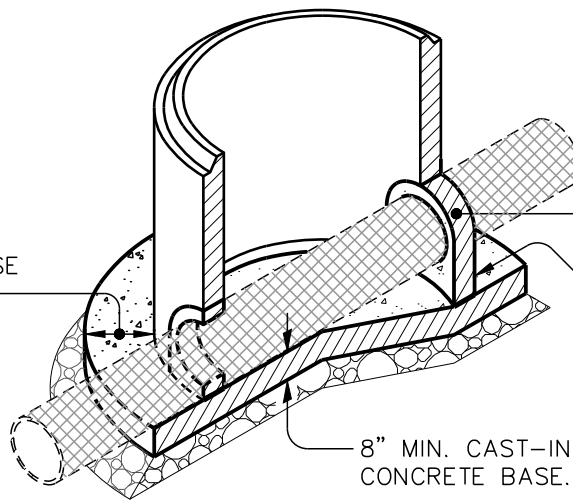
DOGHOUSE OPENING SHALL  
BE PREFORMED BY  
MANUFACTURER OR  
SAW CUT TO FIT PIPE  
OUTSIDE DIAMATER  
PLUS 6"



SEE PLANS FOR  
PROPOSED INVERT(S)  
LOCATION & ELEVATION

**RISER ISOMETRIC VIEW**

ALLOW CONCRETE  
TO FLOW A MIN.  
1'-0" BEYOND BASE  
OF STRUCTURE



FILL DOGHOUSE OPENING  
AROUND EXISTING PIPE WITH  
CONCRETE. SEE NOTE-2.

CONTRACTOR TO APPLY  
WATER PROOFING  
SEALANT AT JOINT (TYP.)

8" MIN. CAST-IN PLACE  
CONCRETE BASE. SEE NOTE-2.

**FOUNDATION SECTION VIEW**

5/05/2020 - 1:02:03pm



**THE CITY OF LYNCHBURG**

**PRECAST CONCRETE  
DOGHOUSE MANHOLE**

USE WITH THE CITY OF LYNCHBURG STANDARD SPECIFICATIONS ONLY

SCALE:  
**NOT TO SCALE**

REVISION DATE:  
**4-2020**

DETAIL #  
**27.07**

SHEET #:  
**1 OF 2**