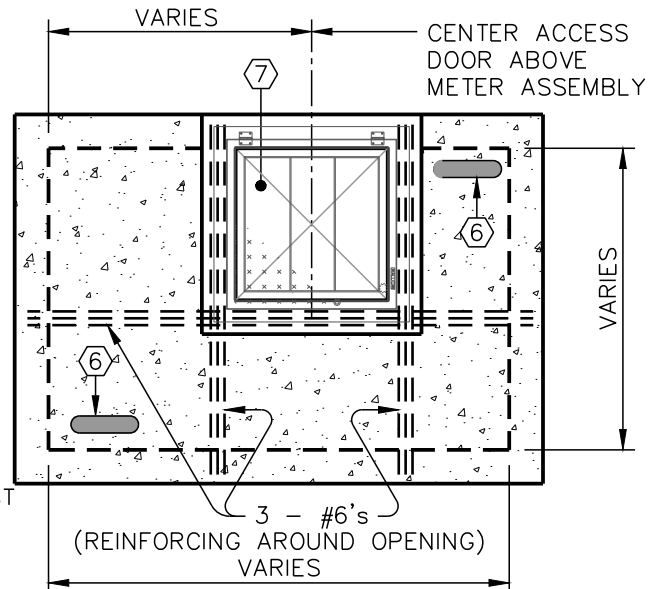


LEGEND

- ① COMPOUND METER ASSEMBLY. METER TO READ IN CUBIC FEET. PROVIDE ORION™ CELLULAR ENDPOINT.
- ② DUCTILE IRON FLANGED ADAPTER (DRESSER #127 OR APPROVED EQUAL).
- ③ WALL SLEEVE WITH LINK SEAL OR APPROVED EQUAL.
- ④ ANCHOR BLOCKING – SEE STANDARD DETAIL 26.02.
- ⑤ TIE ROD ANCHORS – SEE STANDARD DETAIL 26.03.
- ⑥ 4" DIAMETER STEEL VENT PIPE WITH BRASS INSECT SCREEN OVER OUTSIDE END. (STYLE EITHER 180° BEND OR MUSHROOM) (2 REQUIRED)
- ⑦ 36" X 36" ALUMINUM ACCESS HATCH – BILCO MODEL "J-4AL" OR APPROVED EQUAL.
- ⑧ CONCRETE SUPPORTS
- ⑨ AWWA C-509 RESILIENT WEDGE GATE VALVE.
- ⑩ MECHANICAL JOINT RESTRAINT (RESTRAINED JOINT THRUST RINGS)



NOTES:

1. THESE DRAWINGS ARE APPROVED STANDARDS FOR THE INSTALLATION OF LARGE WATER METERS AND THE CONSTRUCTION OF C.M.U. VAULTS. ANY DEVIATIONS FROM THESE STANDARDS SHALL BE REVIEWED AND APPROVED BY THE CITY ENGINEER. NOTE MINIMUM CLEARANCE DIMENSIONS.
2. ALL PIPE AND FITTINGS USED INSIDE THE VAULT OR ENCLOSURE SHALL BE FLANGED DUCTILE IRON; EACH ASSEMBLY SHALL ALSO BE PROPERLY RESTRAINED (BRACED).
3. CONCRETE FOR SUPPORTS AND ANCHORS SHALL BE 3000 PSI.
4. ALL NON-FLANGED FITTINGS SHALL BE TIED WITH THREADED ROD TO ADJACENT FITTINGS AS GENERALLY SHOWN ON THIS SHEET. MEGALUG OR APPROVED EQUAL MAY BE SUBSTITUTED FOR TIE RODS AT MECHANICAL JOINTS.
5. COMPOUND ASSEMBLY SHALL BE ADEQUATELY SUPPORTED BY TWO POURED CONCRETE SUPPORTS SET ON UNDISTURBED EARTH.
6. ALL DIMENSIONS SHALL BE VERIFIED BY CONTRACTOR.
7. SLEEVES SHALL BE SUFFICIENT IN SIZE TO ACCOMMODATE PIPE AND PENETRATION SEAL. SEAL SHALL BE LINK SEAL OR APPROVED EQUAL.
8. VAULT IS NOT DESIGNED TO SUPPORT VEHICULAR TRAFFIC. IF VEHICULAR TRAFFIC MUST PASS OVER VAULT, THE VAULT SHALL BE DESIGNED FOR TRAFFIC LOADING BY A LICENSED ENGINEER.
9. WALLS ARE TO BE CONSTRUCTED OF CONCRETE MASONRY UNITS (C.M.U.) MEETING REQUIREMENTS OF ASTM C-139. MORTAR JOINTS ON INTERIOR TO BE FINISHED FLUSH AND MAY BE LEFT EXTRUDED ON EXTERIOR FACES TO BE UNDERGROUND. C.M.U. TO BE COMPLETELY FILLED WITH GROUT AFTER WALLS ARE COMPLETED AND ALL REINFORCING STEEL IS IN PLACE. GROUT SHALL CONSIST OF ONE PART PORTLAND CEMENT FOR 3 PARTS SAND, THOROUGHLY MIXED WITH WATER TO PRODUCE GROUT HAVING A THICK CREAMY CONSISTENCY.
10. THE CONTRACTOR MAY SUBSTITUTE A PRE CAST OR CAST-IN-PLACE VAULT. THE VAULT SHALL MEET THE MINIMUM DIMENSIONS AS SHOWN ON THE DRAWING.
11. DEFORMED REINFORCING BARS SHALL CONFORM TO ASTM A-615 GRADE 60. ALL REINFORCING BAR DIMENSIONS ON THIS DRAWING ARE TO CENTER OF BARS.
12. AS AN OPTION, THE FLOOR OF VAULT MAY BE POURED WITH 4" MIN. OF 3000 PSI CONCRETE WITH FLOOR DRAIN INSTALLED TO DAYLIGHT.
13. ONE ACCESS DOOR KEY SHALL BE SUBMITTED TO THE METER SUPERVISOR WITH THE DEPARTMENT OF WATER RESOURCES.



THE CITY OF LYNCHBURG

COMPOUND METER VAULT W/SEPARATE FIRE LINE WITH RP* AND IRRIGATION SERVICE

USE WITH THE CITY OF LYNCHBURG STANDARD SPECIFICATIONS ONLY

SCALE:
NOT TO SCALE

REVISION DATE:
4-2020

DETAIL #
26.21

SHEET #:
3 OF 5