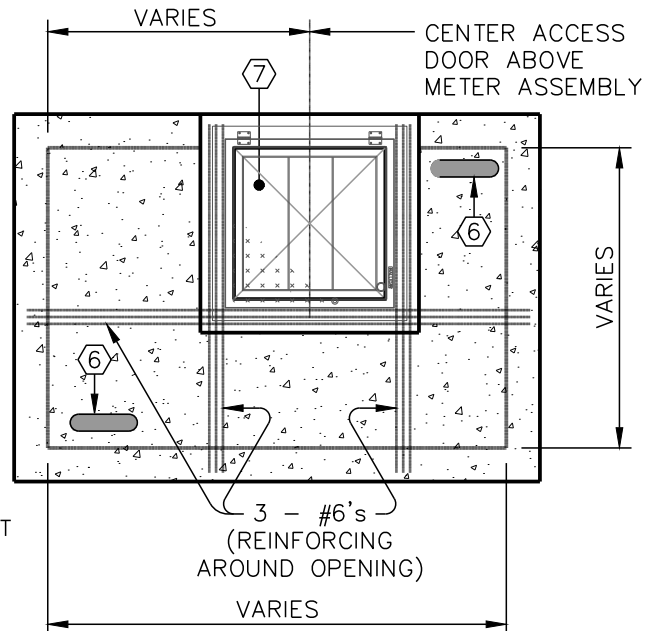


## LEGEND

- ① FIRE LINE METER ASSEMBLY. METER TO READ IN CUBIC FEET. PROVIDE ORION CELLULAR ENDPOINT.
- ② DUCTILE IRON FLANGED ADAPTER (DRESSER #127 OR APPROVED EQUAL).
- ③ WALL SLEEVE WITH LINK SEAL OR APPROVED EQUAL.
- ④ ANCHOR BLOCKING – SEE STANDARD DETAIL 26.02.
- ⑤ TIE ROD ANCHORS – SEE STANDARD DETAIL 26.03.
- ⑥ 4" DIAMETER STEEL VENT PIPE WITH BRASS INSECT SCREEN OVER OUTSIDE END. (STYLE EITHER 180° BEND OR MUSHROOM) (2 REQUIRED)
- ⑦ 36" X 36" ALUMINUM ACCESS HATCH – BILCO MODEL "J-4AL" OR APPROVED EQUAL.
- ⑧ CONCRETE SUPPORTS
- ⑨ AWWA C-509 RESILIENT WEDGE GATE VALVE.
- ⑩ MECHANICAL JOINT RESTRAINT (RESTRAINED JOINT THRUST RING) TYP.



## NOTES:

1. THESE DRAWINGS ARE APPROVED STANDARDS FOR THE INSTALLATION OF LARGE WATER METERS AND THE CONSTRUCTION OF C.M.U. VAULTS. ANY DEVIATIONS FROM THESE STANDARDS SHALL BE REVIEWED AND APPROVED BY THE CITY ENGINEER. NOTE MINIMUM CLEARANCE DIMENSIONS.
2. ALL PIPE AND FITTINGS USED INSIDE THE VAULT AND THE RP\* ENCLOSURE SHALL BE FLANGED DUCTILE IRON.
3. CONCRETE FOR SUPPORTS AND ANCHORS SHALL BE 3000 PSI.
4. ALL NON-FLANGED FITTINGS SHALL BE TIED WITH THREADED ROD TO ADJACENT FITTINGS AS GENERALLY SHOWN ON THIS SHEET. MEGALUG OR APPROVED EQUAL MAY BE SUBSTITUTED FOR TIE RODS AT MECHANICAL JOINTS.
5. METER AND STRAINER ASSEMBLY SHALL BE ADEQUATELY SUPPORTED BY TWO POURED CONCRETE SUPPORTS SET IN UNDISTURBED EARTH.
6. ALL DIMENSIONS SHALL BE VERIFIED BY CONTRACTOR.
7. WALL SLEEVES SHALL BE SUFFICIENT IN SIZE TO ACCOMMODATE PIPE AND PENETRATION SEAL. SEAL SHALL BE LINK SEAL OR APPROVED EQUAL.
8. VAULT IS NOT DESIGNED TO SUPPORT VEHICULAR TRAFFIC. IF VEHICULAR TRAFFIC MUST PASS OVER VAULT, THE VAULT SHALL BE DESIGNED FOR TRAFFIC LOADING BY A LICENSED ENGINEER.
9. WALLS ARE TO BE CONSTRUCTED OF CONCRETE MASONRY UNITS (C.M.U.) MEETING REQUIREMENTS OF ASTM C-139. MORTAR JOINTS ON INTERIOR TO BE FINISHED FLUSH AND MAY BE LEFT EXTRUDED ON EXTERIOR FACES TO BE UNDERGROUND. CMU TO BE COMPLETELY FILLED WITH GROUT AFTER WALLS ARE COMPLETED AND ALL REINFORCING STEEL IS IN PLACE. GROUT SHALL CONSIST OF ONE PART PORTLAND CEMENT FOR 3 PARTS SAND, THOROUGHLY MIXED WITH WATER TO PRODUCE GROUT HAVING A THICK CREAMY CONSISTENCY.
10. THE CONTRACTOR MAY SUBSTITUTE A PRECAST OR CAST-IN-PLACE VAULT. THE VAULT SHALL MEET THE MINIMUM DIMENSIONS AS SHOWN ON THE DRAWING. SHOP DRAWING(S) OF ANY CAST-IN-PLACE OR PRECAST VAULT SHALL BE SUBMITTED TO DWR FOR APPROVAL PRIOR TO ORDERING.



## THE CITY OF LYNCHBURG

### COMBINATION FIRE LINE AND DOMESTIC METER ASSEMBLY

USE WITH THE CITY OF LYNCHBURG STANDARD SPECIFICATIONS ONLY

SCALE:  
NOT TO SCALE

REVISION DATE:  
4-2020

DETAIL #  
**26.20**

SHEET #:  
**2** OF **4**