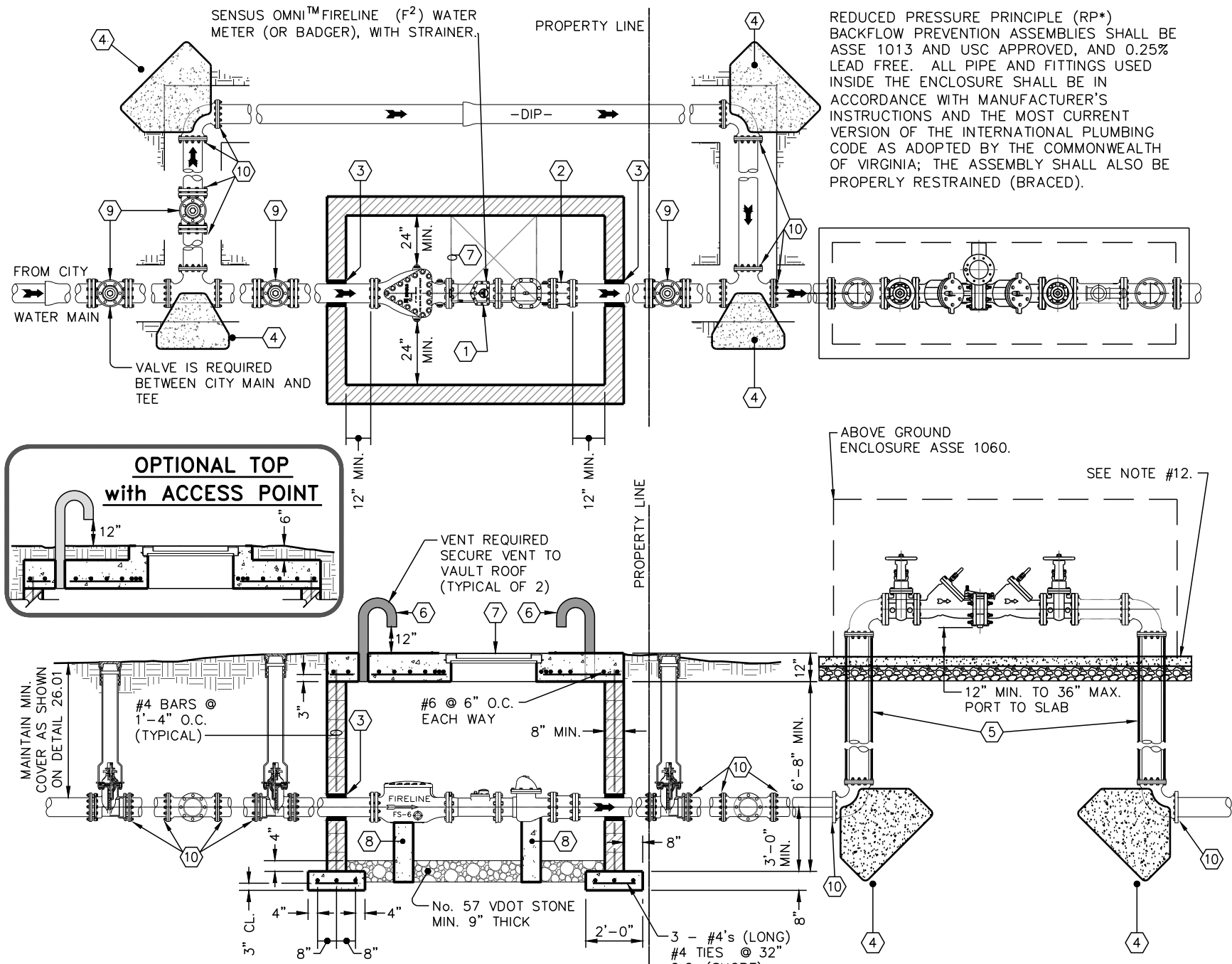




USE WITH THE CITY OF LYNCHBURG STANDARD SPECIFICATIONS ONLY

COMBINATION FIRE LINE AND DOMESTIC METER ASSEMBLY

THE CITY OF LYNCHBURG



REDUCED PRESSURE PRINCIPLE (RP\*) BACKFLOW PREVENTION ASSEMBLIES SHALL BE ASSE 1013 AND USC APPROVED, AND 0.25% LEAD FREE. ALL PIPE AND FITTINGS USED INSIDE THE ENCLOSURE SHALL BE IN ACCORDANCE WITH MANUFACTURER'S INSTRUCTIONS AND THE MOST CURRENT VERSION OF THE INTERNATIONAL PLUMBING CODE AS ADOPTED BY THE COMMONWEALTH OF VIRGINIA; THE ASSEMBLY SHALL ALSO BE PROPERLY RESTRAINED (BRACED).

\*IF THE OWNER OR CUSTOMER WISHES TO MONITOR THEFT FROM PRIVATE FIRE HYDRANTS OR UNDERGROUND LEAKS, A REDUCED PRESSURE PRINCIPLE DETECTOR ASSEMBLY (RPDA), ASSE 1047, WHICH IS USC APPROVED, AND 0.25% LEAD FREE, MAY BE USED INSTEAD OF A RP.

SCALE: NOT TO SCALE  
 REVISION DATE: 4-2020  
 SHEET #: 1 OF 4

DETAIL # 26.20