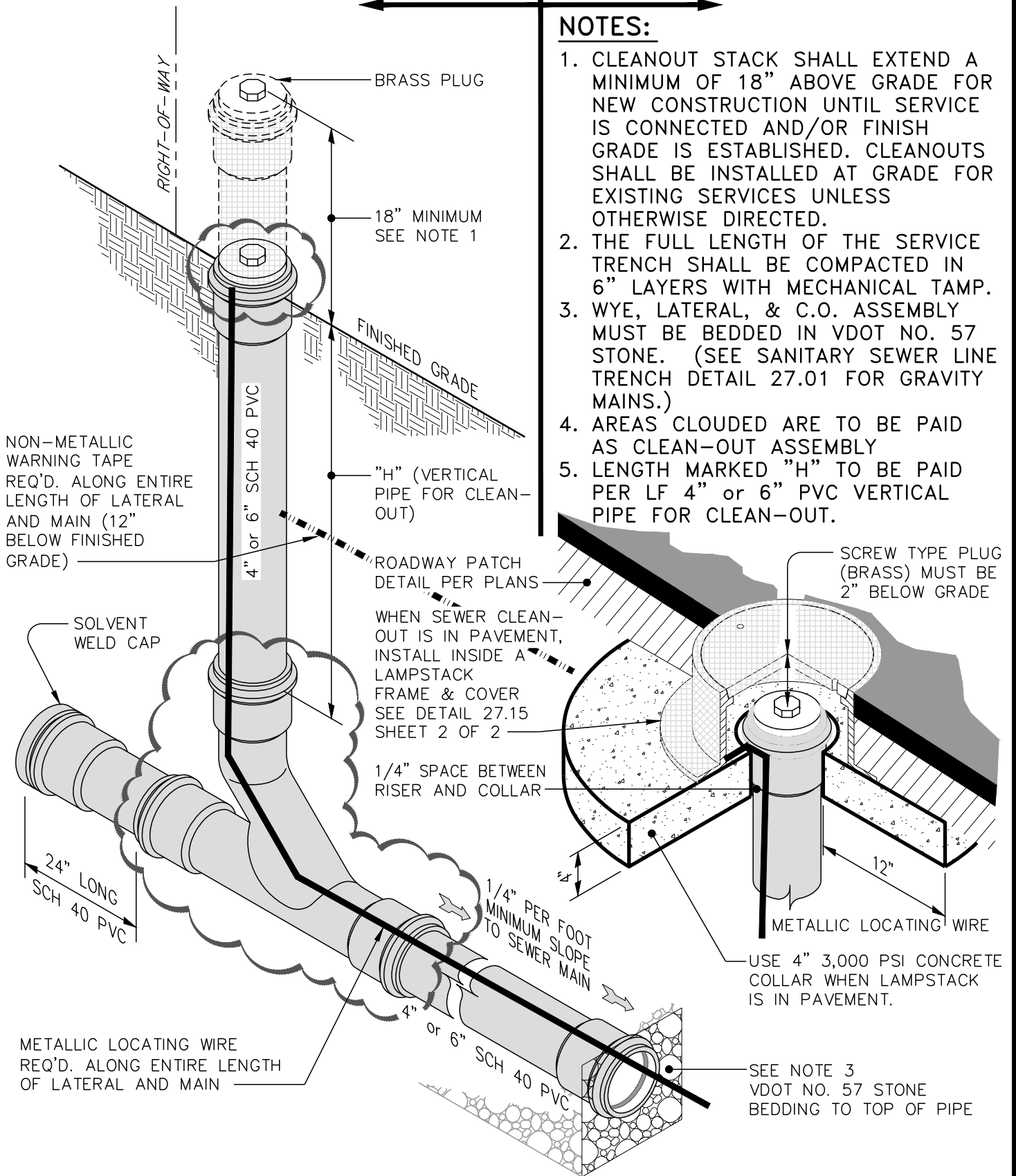


UNPAVED AREAS PAVED AREAS

NOTES:

1. CLEANOUT STACK SHALL EXTEND A MINIMUM OF 18" ABOVE GRADE FOR NEW CONSTRUCTION UNTIL SERVICE IS CONNECTED AND/OR FINISH GRADE IS ESTABLISHED. CLEANOUTS SHALL BE INSTALLED AT GRADE FOR EXISTING SERVICES UNLESS OTHERWISE DIRECTED.
2. THE FULL LENGTH OF THE SERVICE TRENCH SHALL BE COMPACTED IN 6" LAYERS WITH MECHANICAL TAMP.
3. WYE, LATERAL, & C.O. ASSEMBLY MUST BE BEDDED IN VDOT NO. 57 STONE. (SEE SANITARY SEWER LINE TRENCH DETAIL 27.01 FOR GRAVITY MAINS.)
4. AREAS CLOUDED ARE TO BE PAID AS CLEAN-OUT ASSEMBLY
5. LENGTH MARKED "H" TO BE PAID PER LF 4" or 6" PVC VERTICAL PIPE FOR CLEAN-OUT.



NON-METALLIC WARNING TAPE REQ'D. ALONG ENTIRE LENGTH OF LATERAL AND MAIN (12" BELOW FINISHED GRADE)

SOLVENT WELD CAP

24" LONG
SCH 40 PVC

METALLIC LOCATING WIRE REQ'D. ALONG ENTIRE LENGTH OF LATERAL AND MAIN

ROADWAY PATCH
DETAIL PER PLANS

WHEN SEWER CLEAN-OUT IS IN PAVEMENT, INSTALL INSIDE A LAMPSTACK FRAME & COVER SEE DETAIL 27.15 SHEET 2 OF 2

1/4" SPACE BETWEEN RISER AND COLLAR

1/4" PER FOOT MINIMUM SLOPE TO SEWER MAIN

SCREW TYPE PLUG (BRASS) MUST BE 2" BELOW GRADE

METALLIC LOCATING WIRE

USE 4" 3,000 PSI CONCRETE COLLAR WHEN LAMPSTACK IS IN PAVEMENT.

SEE NOTE 3
VDOT NO. 57 STONE BEDDING TO TOP OF PIPE



THE CITY OF LYNCHBURG

TYPICAL PVC SEWER LATERAL CLEANOUT WITH IN-LINE WYE

USE WITH THE CITY OF LYNCHBURG STANDARD SPECIFICATIONS ONLY

SCALE:
NOT TO SCALE

DETAIL #
27.15

REVISION DATE:
12-15-2016

SHEET #:
1 OF 2

12/17/2016 - 2:23:06pm