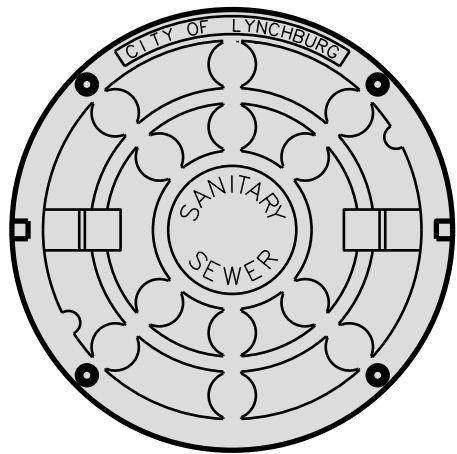
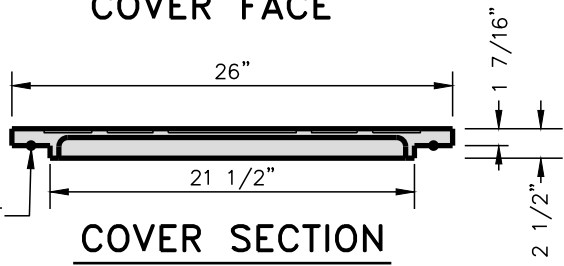


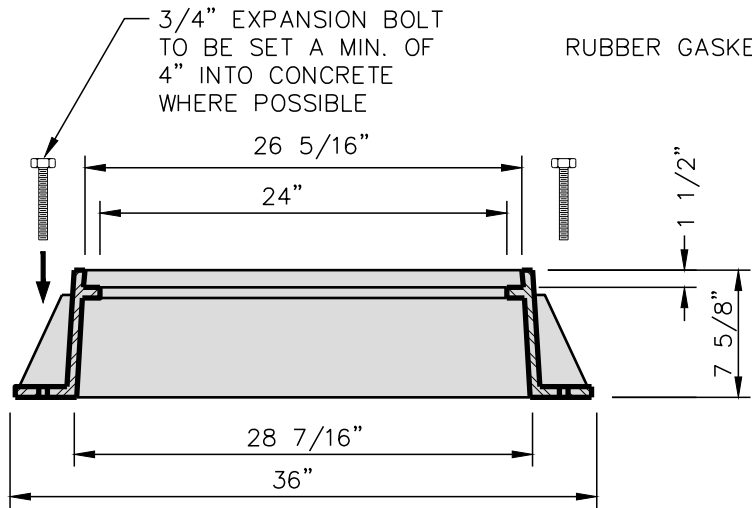
**FRAME TOP VIEW**



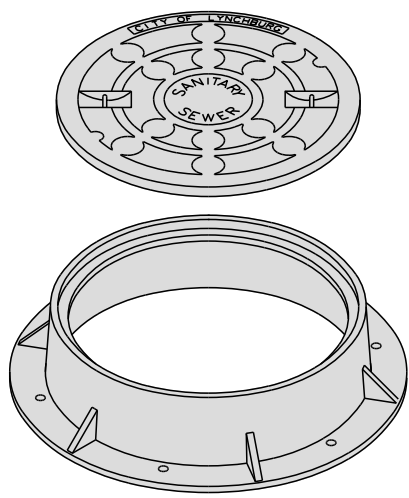
**COVER FACE**



**COVER SECTION**



**FRAME SECTION**



**ISOMETRIC**

**NOTES:**

1. MANHOLE FRAMES AND COVERS SHALL BE ROADWAY TYPE WITH DEEP SOCKET COVERS. MACHINE FRAMES AND COVERS TO PREVENT RATTLING. CASTINGS SHALL BE GRAY IRON MEETING REQUIREMENTS OF ASTM A48, CLASS 30.

12/17/2016 - 2:18:47pm



**THE CITY OF LYNCHBURG**

**WATERPROOF  
MANHOLE FRAME and COVER**

USE WITH THE CITY OF LYNCHBURG STANDARD SPECIFICATIONS ONLY

SCALE:  
NOT TO SCALE

REVISION DATE:  
12-15-2016

DETAIL #  
**27.11**

SHEET #:  
1 OF 1