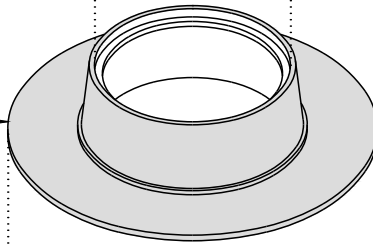




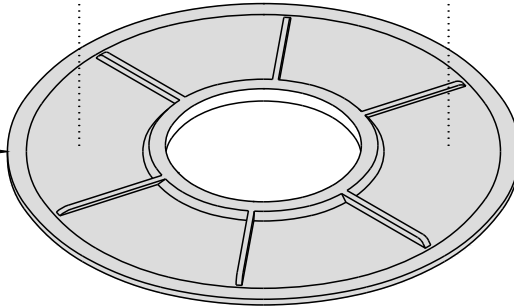
PART #

FORD A32-LL
WITH LIFTING BAR



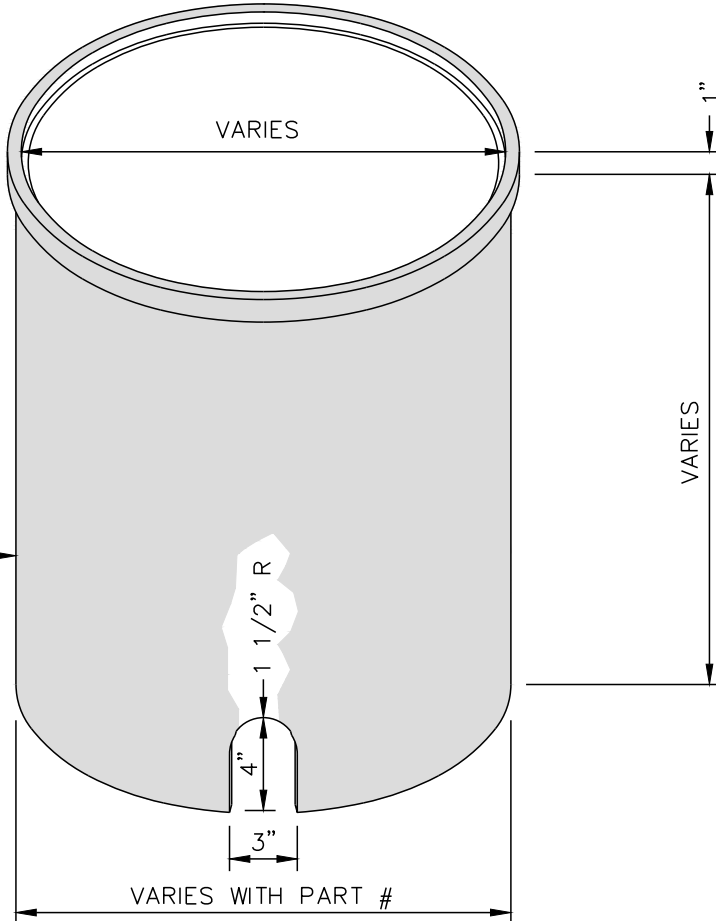
PART #

FORD EXT-1 for
24" EXT. RING
FORD EXT-3 for
30" EXT. RING



PART #

DFW 1824,
DFW 2430,
or DFW 3030



NOTES:

1. THIS BOX AND LID IS NON-TRAFFIC BEARING. WHEN A TRAFFIC BEARING BOX AND LID IS REQUIRED, DETAIL SHALL BE SUBMITTED TO CITY ENGINEER FOR APPROVAL.



THE CITY OF LYNCHBURG

STANDARD 18" x 24", 24" x 30", or
30" x 30" - ROUND METER BOX

USE WITH THE CITY OF LYNCHBURG STANDARD SPECIFICATIONS ONLY

SCALE:
NOT TO SCALE

REVISION DATE:
12-15-2016

DETAIL #
26.15

SHEET #:
1 OF 1

12/15/2016 - 5:53:30pm