

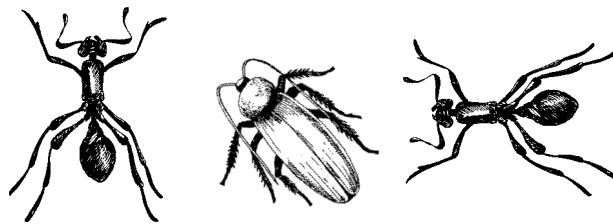


HOME MAINTENANCE

Keeping Homes Safe and Families Healthy

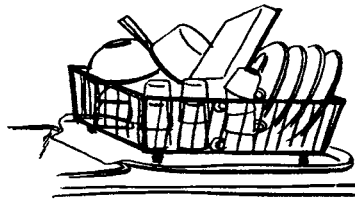


Debugging Your Home



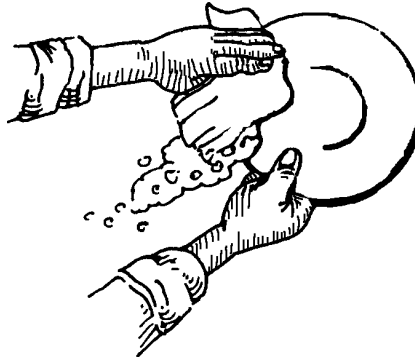
Ants, flies, roaches, and fleas will make your home theirs if you give them what they need to live: food and shelter. If bugs do not have food, water, or places to hide, they will not stay in your home. Flies, roaches, and fleas may carry disease germs that can make you sick. Clean your home regularly and remove clutter to keep bugs out of your home. Try the suggestions listed below.

✓ Clean your kitchen daily.



✓ Cover and refrigerate all cooked foods immediately after meals.

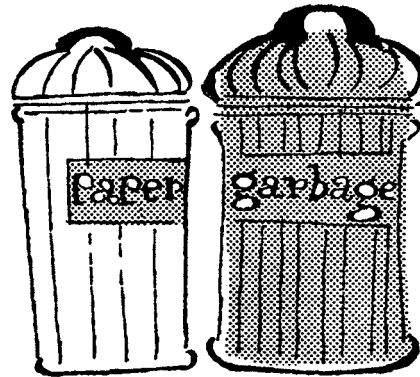
✓ Wash, air-dry, and put away dishes directly after eating.



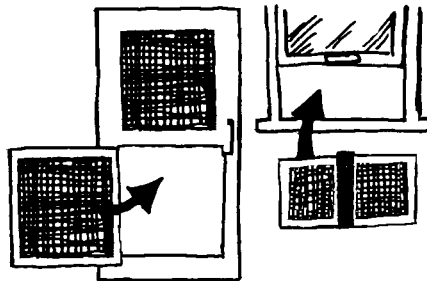
✓ Remove any visible crumbs of food and spills from the floor, table, and counters as soon as you see them.



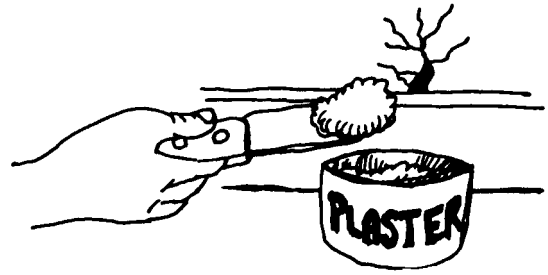
✓ Store garbage in covered cans or tightly closed plastic bags.



✓ Put screens on doors and windows to keep out flies.



✓ Seal cracks to keep bugs out. Depending on where the cracks are, a strong tape, caulking, or a clear-drying, craft-type glue may be used to seal small cracks. Plaster can be used to fill large cracks.



✓ Get rid of clutter (stacks of papers, old clothes) where bugs might hide.



Special Helps When You're ...

Storing Uncooked Food

✓ Check food packaging, boxes, and grocery bags for bugs when unpacking groceries.

✓ Store bulk foods such as rice, sugar, flour, cornmeal, cereals, and pasta in glass jars with tightly closed lids. Plastic containers with tightly fitting lids will also work.



Caring for Houseplants

✓ Check plants for bugs before bringing them into your home.

✓ To remove bugs, wash plants with mild soapy water.



Caring for Pets

✓ If you have inside pets, keep them clean and clean up after them.



✓ Store pet food in tightly sealed containers.

✓ If your pet is likely to get fleas, check for fleas periodically.

✓ Keep your pet's feeding dish and eating area clean.

Prevention is a key to debugging your home.

PENNSTATE



College of Agricultural Sciences
Agricultural Research and Cooperative Extension

Prepared by Cathy Falcon Bowen, associate professor, and Marilyn Furry, associate professor, Department of Agricultural and Extension Education. This information was adapted, with permission, from material originally prepared by Judith A. Wessel, extension specialist, Department of Family Resource Management, and William F. Lyon, Extension Entomologist, Household and Structural Pests, The Ohio State University.

Visit Penn State's College of Agricultural Sciences on the Web: agsci.psu.edu

Penn State College of Agricultural Sciences research, extension, and resident education programs are funded in part by Pennsylvania counties, the Commonwealth of Pennsylvania, and the U.S. Department of Agriculture.

This publication is available from the Publications Distribution Center, The Pennsylvania State University, 112 Agricultural Administration Building, University Park, PA 16802. For information telephone 814-865-6713.

This publication is available in alternative media on request.

The Pennsylvania State University is committed to the policy that all persons shall have equal access to programs, facilities, admission, and employment without regard to personal characteristics not related to ability, performance, or qualifications as determined by University policy or by state or federal authorities. It is the policy of the University to maintain an academic and work environment free of discrimination, including harassment. The Pennsylvania State University prohibits discrimination and harassment against any person because of age, ancestry, color, disability or handicap, national origin, race, religious creed, sex, sexual orientation, gender identity, or veteran status. Discrimination or harassment against faculty, staff, or students will not be tolerated at The Pennsylvania State University. Direct all inquiries regarding the nondiscrimination policy to the Affirmative Action Director, The Pennsylvania State University, 328 Boucke Building, University Park, PA 16802-5901; Tel 814-865-4700/V, 814-863-1150/TTY.

© The Pennsylvania State University 2002

Produced by Ag Communications and Marketing

Code # UI319

R1M10/09mpc4063