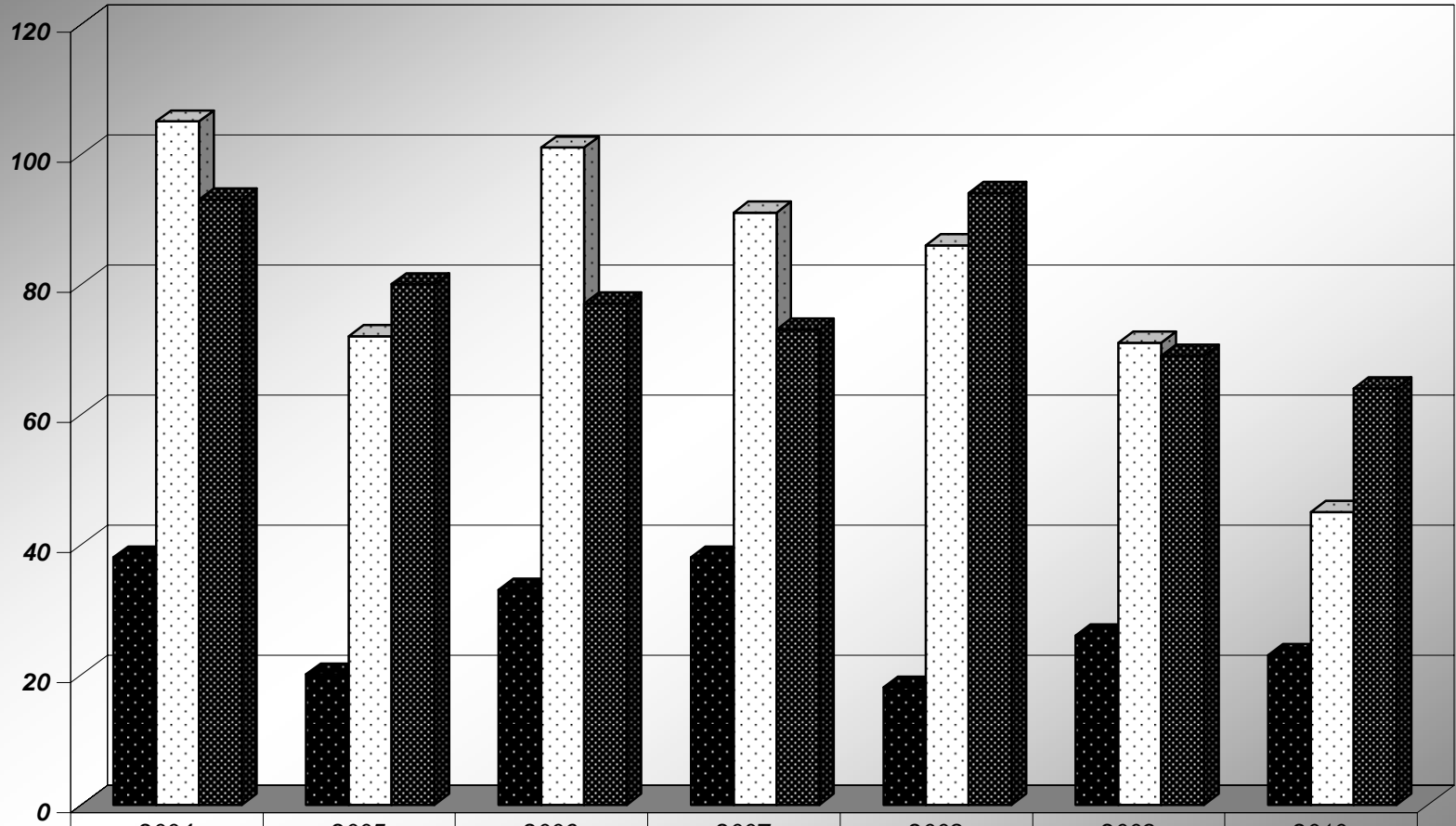


### Project Review Totals (by Fiscal Year)



■ <i>Public Hearing</i>	38	20	33	38	18	26	23
□ <i>Site Plans</i>	105	72	101	91	86	71	45
▣ <i>Subdivision Plats</i>	93	80	77	73	94	69	64
<i>Total Reviews</i>	236	172	211	202	198	166	112